

cenitCONNECT  
APM



## cenitCONNECT Advanced Process Management

Intelligent Process Control –  
Based on SAP Standards



cenit



## Cross-Functional Process and Activity Management

**cenitCONNECT Advanced Process Management (APM) for intelligent optimization of the SAP standard**

The implementation of business processes not only requires a high level of flexibility – it also requires a high degree of standardization. This applies to engineering processes as well as other business processes. New information must be taken into consideration as quickly as possible, while ensuring that all requirements for decision-making, approval and documentation are met. In addition to SAP-based information, external information may also be involved. What's more, each process is also a platform for cross-functional communication and collaboration in line with the decision-making rules within your company.

### **This is where the CENIT solution comes into play:**

The intelligent cenitCONNECT APM solution, offering standardized and flexible process and activity management, supports planners throughout the entire planning process.

Business process and team templates simplify the creation of related processes.

The powerful CENIT Advisor technology simplifies and automates routine tasks, such as the collection of data and information or the distribution of data packages.

### **An ideal addition of the Engineering Record**

The **SAP Engineering Record** is a flexible tool in **SAP PLM 7** that enables change management for all major PLM objects. It supports scenarios for complex change requests/orders. **cenitCONNECT APM** extends the standard **SAP PLM 7 solution**, offering a broader range of functions and providing support for end-to-end change management, from engineering right through to manufacturing change implementation, and many other processes, such as document approval workflows.



# cenitCONNECT APM – Your Control Center

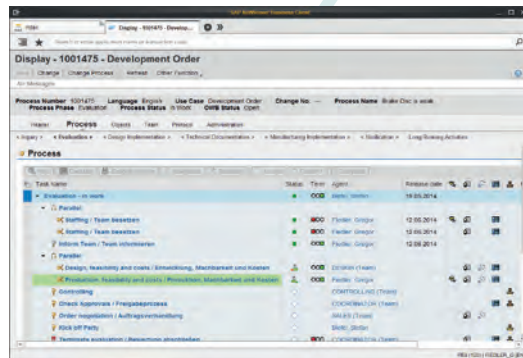
cenitCONNECT APM is the control center for planning, implementing and controlling your business processes. Using state-of-the-art process optimization and process automation technologies, the various interfaces in cenitCONNECT APM provide you with all the information at a glance that you need to execute your task. This allows you to pinpoint critical projects and activities, and respond quickly to deviations and delays.

## Workplace

Your personal access point to the world of PLM. Here, you can manage your work list, which contains a traffic light dashboard with the real time status of all your processes and tasks. The personalized interface allows you to navigate directly to processes and activities.

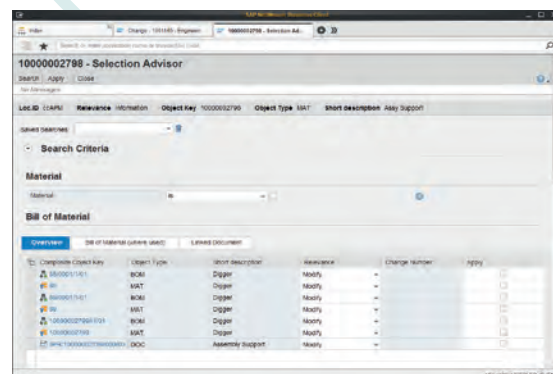
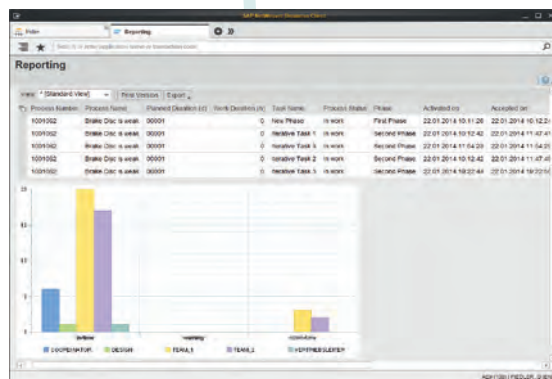
## Process Workbench

Process modeling without the need for IT knowledge or programming, implemented by business users and process owners themselves. Highly functional, flexible and scalable, providing comprehensive support for compliance requirements.

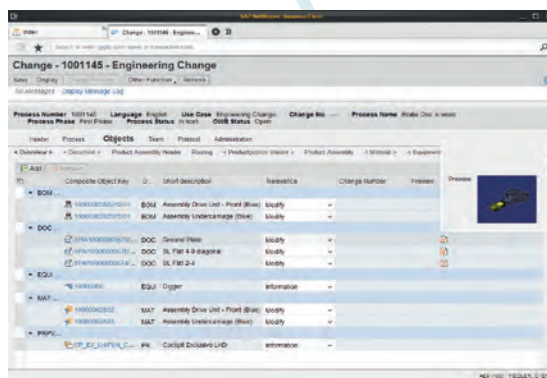
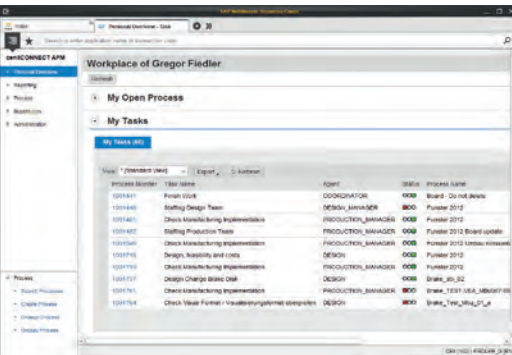


## Monitoring

A platform for the clear representation and evaluation of current processes. Real time reporting in the context of operations and activities. Various display options and formats to give you an excellent overview of your processes.

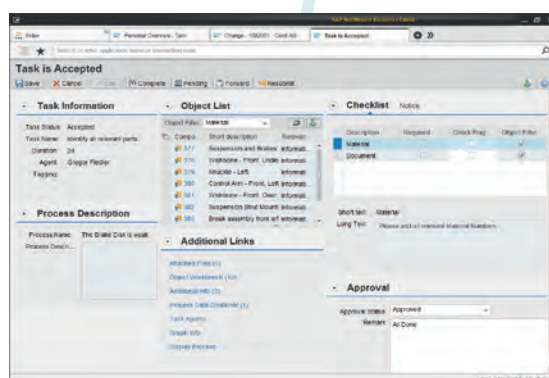


*You can see exactly what you need at the moment when you make your decision!*



### Object Workbench

A virtual workspace with a clear representation of each SAP business object involved in a process. With all information available at a glance, it is easier than ever to integrate SAP Document Management, CAD data, bills of material and other PLM objects, and you can visualize them at the click of a button.



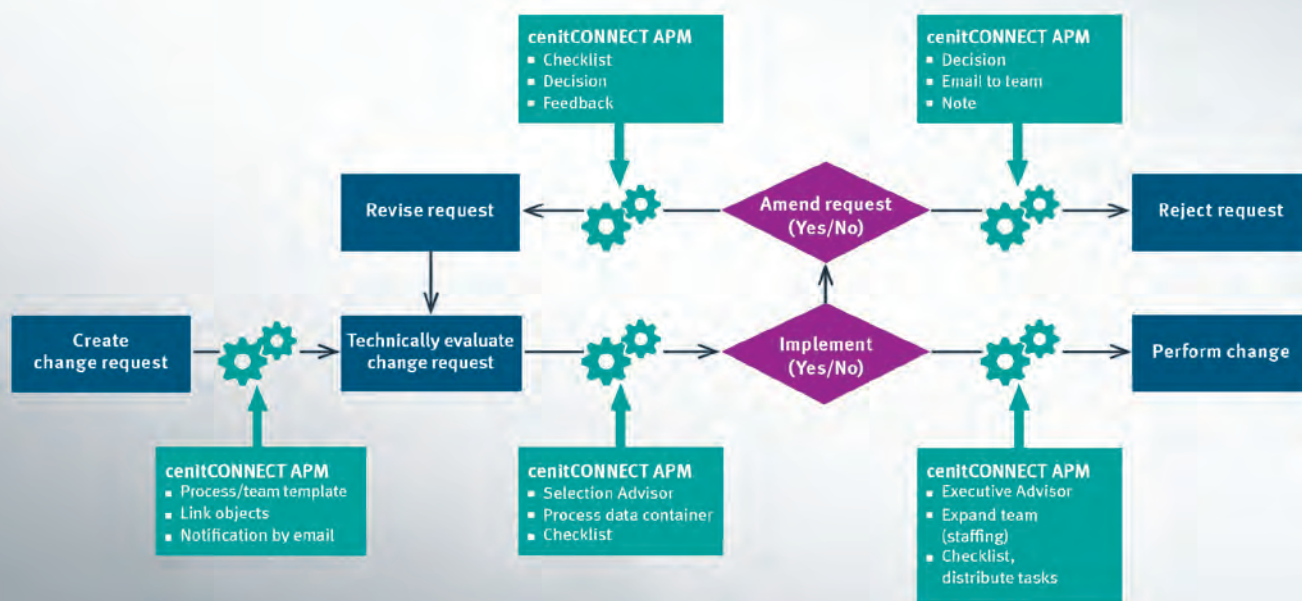
### Task Desk

Your personal interface for editing tasks. Place the most important items directly in your central workspace in a clearly structured format so that you can access information about activities, processes, checklists, and objects quickly and easily.

### Advisor Technology

The innovative Advisor technology seeks out information, thinks in the same way as you, optimizes processes and gets the most out of your SAP investment. The solution includes the Selection Advisor for advanced search in SAP, the Execute Advisor for reducing operational activities and the Decision feature for dynamic workflow creation.





## A Slightly Different Workflow

The unique capabilities of the cenitCONNECT Advanced Process Management (APM) solution give you complete flexibility when developing your business processes. cenitCONNECT APM allows you to be involved in designing your processes, enabling you to optimize them as effectively as possible.

Business users, such as process owners or decision-makers can model and implement processes without the need for IT or programming knowledge. Thanks to the high degree of scalability, the workflow can be created to meet the most diverse requirements in a reliable and targeted manner, and can be adapted continuously while the process is running. This includes, for example, change management, design to order and the product creation process in engineering. Business applications such as annual planning, the collection of arrears and cash management are also provided with optimum support.

The support for various roles within the process allows you to reliably implement your compliance requirements, such as processes based on dual control techniques including digital signatures and audit-compliant documentation of decisions. The collection and recording of information, as well as the processing of checklists, coupled with the options provided by multiprocess management for splitting more complex processes into sub-processes and mapping these processes, round off the extensive range of functions offered by cenitCONNECT APM.

### Highlights

- Process management on all necessary levels with a standardized, enterprise-wide structure
- Standardized business processes from the highest level down to the details
- Release and backup processes
- Global collaboration
- Cross-functional collaboration
- Multi-SAP system support
- Simple template management
- Advisor technology to support search and implementation
- Corporate knowledge captured in each process through checklists, decisions, milestones, notes and documents
- Rapid integration of new business units and new team members through flexible process templates

### A variety of applications

- Automotive change management
- Mechanical engineering change management
- Master data management
- Business planning and compliance
- Technical quotation and order management
- Model and prototype design and build
- Document approvals
- Configuration management



## CENIT AG

For over 25 years, CENIT has been successfully active as a leading consulting and software specialist for optimizing business processes in the Digital Factory, Product Lifecycle Management (PLM), SAP Solutions, Enterprise Information Management (EIM), Business Optimization & Analytics (BOA), and Application Management Services (AMS) fields.

CENIT complements standard solutions by strategic partners such as DASSAULT SYSTEMES, SAP and IBM by providing well-established own software solutions. These include the FASTSUITE product family for software solutions in the Digital Factory field, cenitCONNECT for SAP PLM-related processes, cenitSPIN as a high-performance PLM Desktop, CENIT ECLISO for efficient information management as well as CENIT SERVICEMANAGER – a platform for integrating software systems into the ECM system.

The enterprise is represented at 17 locations in six countries and employs around 700 staff worldwide. CENIT's employees support customers primarily from the automotive, aerospace, mechanical engineering, tooling and molding, financial services, commercial and consumer goods industries.

CENIT is listed in the Prime Standard of the German stock market (Deutsche Börse).

## Contact

### CENIT AG

Industriestraße 52-54  
70565 Stuttgart  
Germany  
Phone: +49 711 78253390  
Fax: +49 711 782544-3390  
E-mail: [info@cenit.de](mailto:info@cenit.de)  
[www.cenit.com](http://www.cenit.com)

### CENIT North America Inc.

691 N. Squirrel Road, Suite 275,  
Auburn Hills, Michigan 48326  
USA  
Phone: +1 248 276-8540  
Fax: +1 248 856-2478  
E-mail: [info@cenit.com](mailto:info@cenit.com)  
[www.cenit.com](http://www.cenit.com)

### CENIT (Switzerland) AG

Im Langhag 11  
8307 Effretikon  
Switzerland  
Phone: +41 52 354-1010  
Fax: +41 52 354-1011  
E-mail: [info@cenit-ag.ch](mailto:info@cenit-ag.ch)  
[www.cenit.com](http://www.cenit.com)