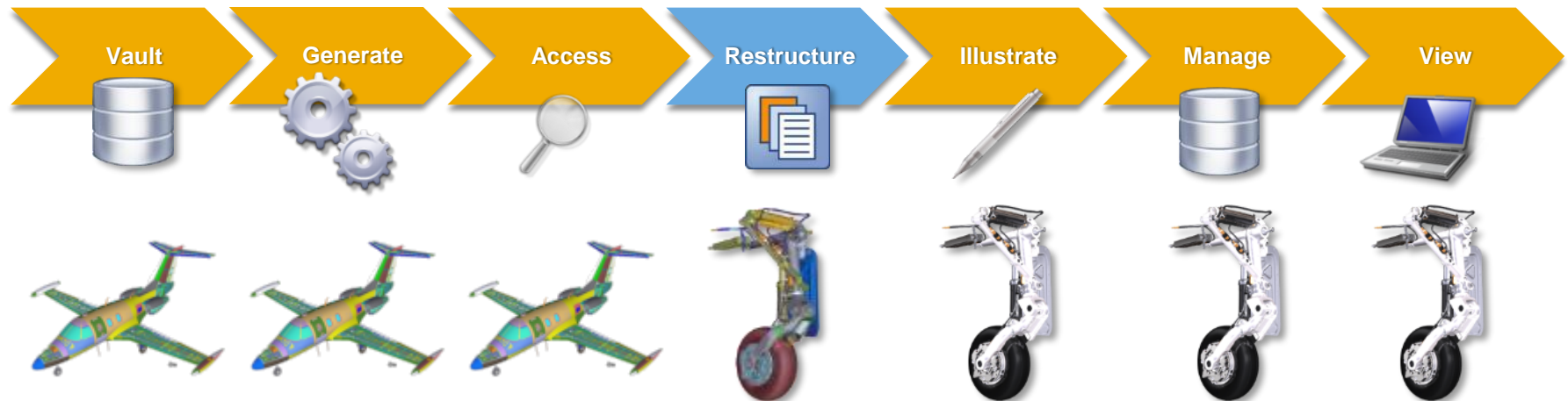


Enterprise Product Engineering Overview

SAP Visual Enterprise Product Engineering

Example of Integrated Workflow



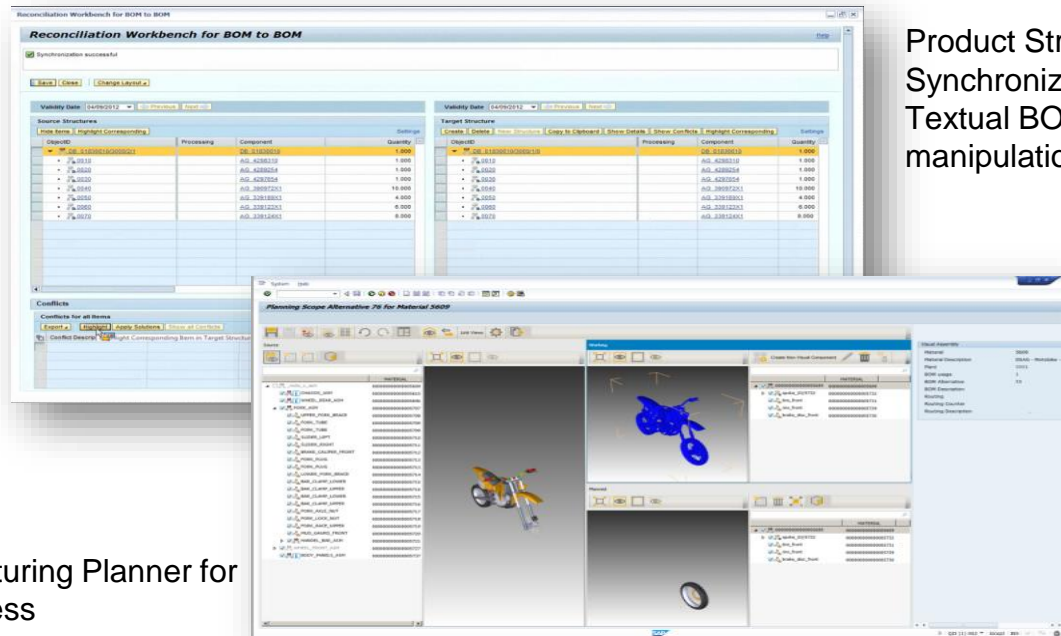
Production Preparation

Routing Design | Component Allocation | Plant Material Management

Capabilities

- Textual or visual handover functionality
- Visualization of engineering designs during the planning process
- Complete integration with ERP
- Conflict management indicators
- Support for engineering change management
- Support for distributed manufacturing

Visual Manufacturing Planner for 3D based Process



Product Structure Synchronization for Textual BOM manipulation

Enable the handover to manufacturing process by leveraging design data

SAP 3D Visual Enterprise - Product Suite descriptions

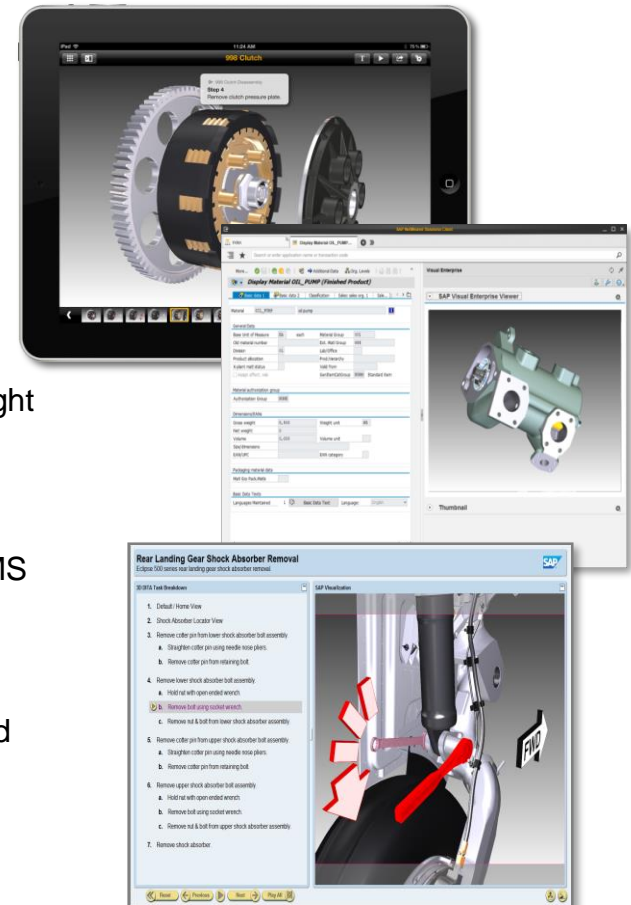
SAP Visual Enterprise Solutions combine visual product and plant information with business content, this provides an unprecedented combination of traditional business information with fully interactive 3D visuals

Key capabilities

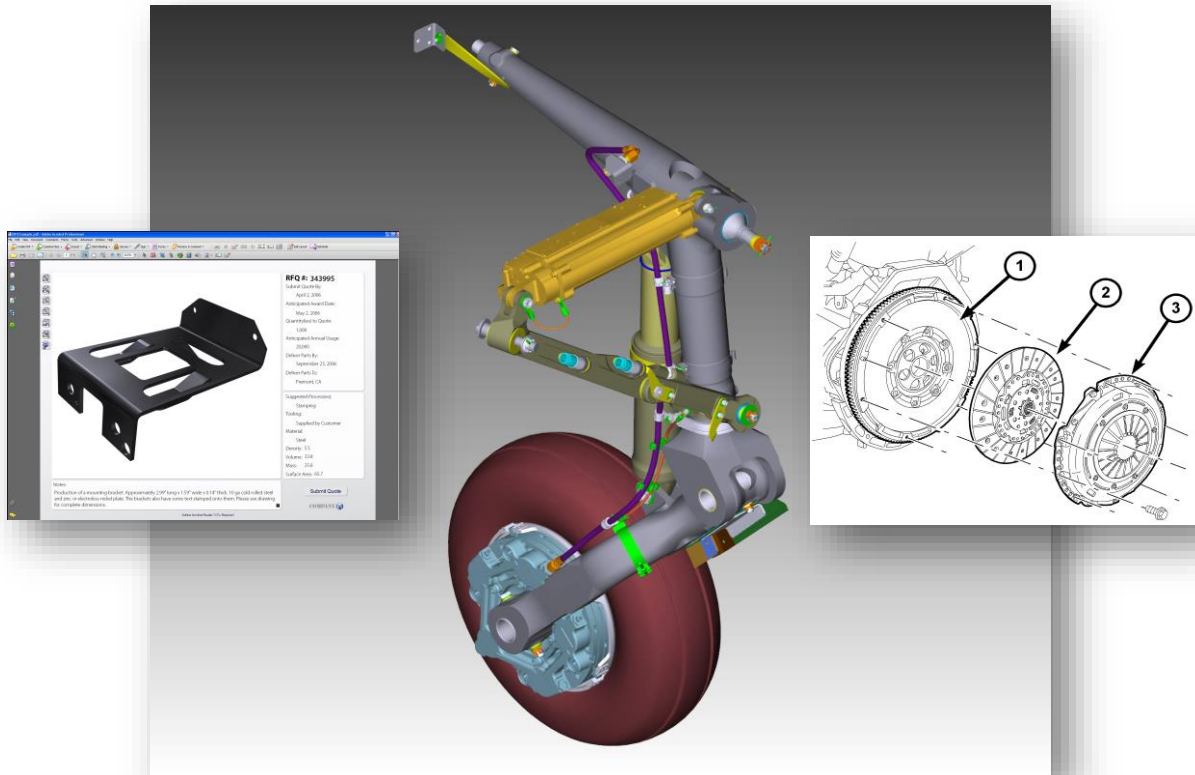
- **SAP Visual Enterprise Viewer (VEV)** Interactive Viewing
 - Powerful, easy-to-use and free-of-charge
- **SAP Visual Enterprise Author (VEA)** powerful content creation tool
- **SAP Visual Enterprise Generator (VEG)** is a server solution that automates:
 - The publishing of 3D computer-aided design (CAD) files into a lightweight format
 - Integrates with external data sources and destinations; consumes and combines graphical data with textual information
 - Publishes graphics, videos, and documents with optional storage in DMS

Benefits

- › Enables better and faster decision making.
- › Improves productivity and process efficiency by providing visual navigation and query of product information and graphical animation of procedures



SAP Visual Enterprise Generator: Publishing Engine



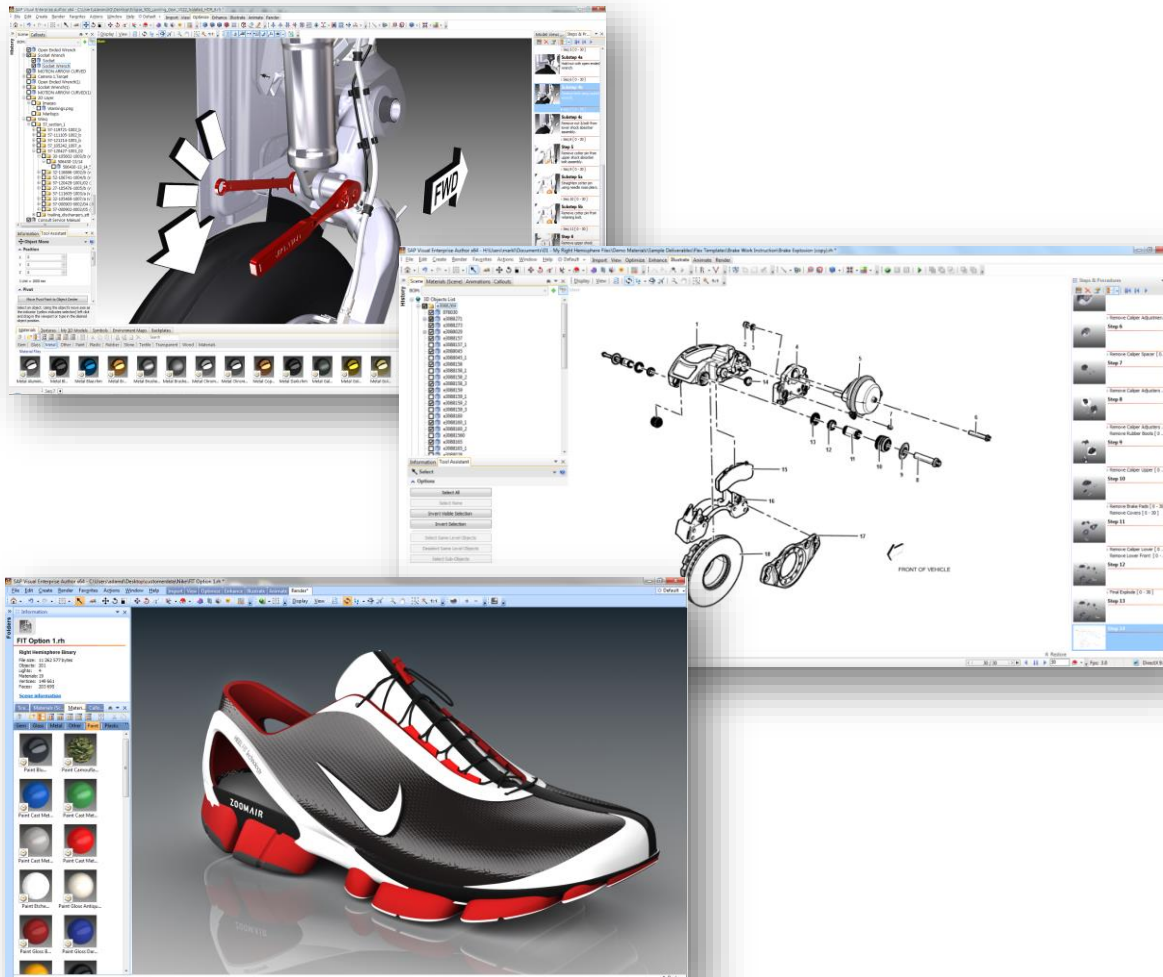
SAP Visual Enterprise GENERATOR



© 2011 SAP AG

- CAD Translation
- Ultra Lightweight File Generation
- Graphics Manipulation
- Content Publishing
- Workflow Automation
- Asset Management

Visual Enterprise Author: Deliverable Creation Solution



SAP Visual Enterprise AUTHOR



© 2011 SAP AG

- Graphics Manipulation
- Content Authoring
- 3D Animations
- Technical Illustration Tools
- Photo-realistic Imagery
- Query Definition

Visual Enterprise Viewer: Delivery and Collaboration

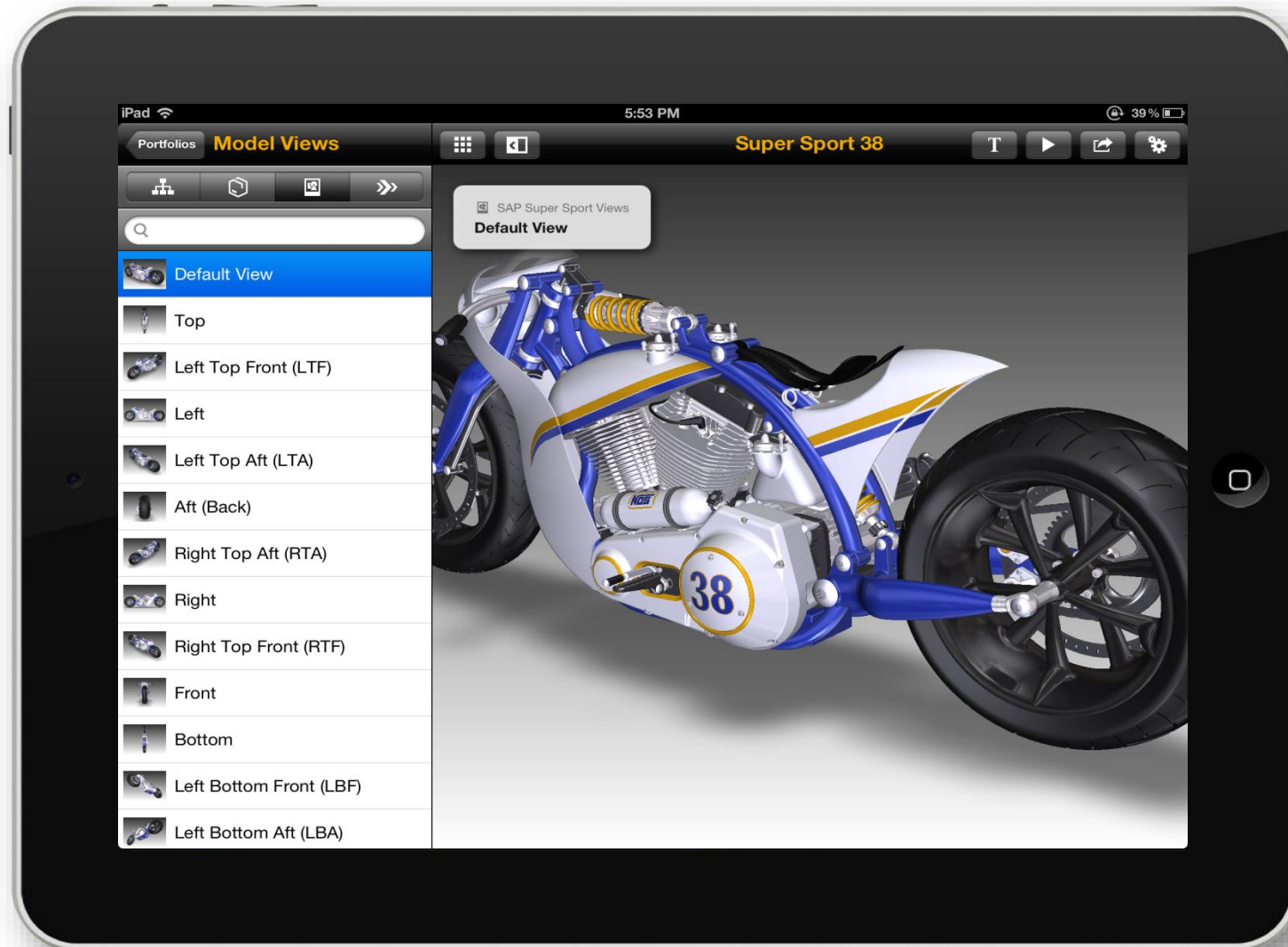


SAP Visual Enterprise VIEWER



- Collaboration
- View and Mark-up
- View 3D Models and Animations
- Embed 3D in MS-Office, PDF, and HTML
- Mobile viewers

Mobile Delivery of Visual Work Instructions (VWI) with Visual Enterprise Viewer



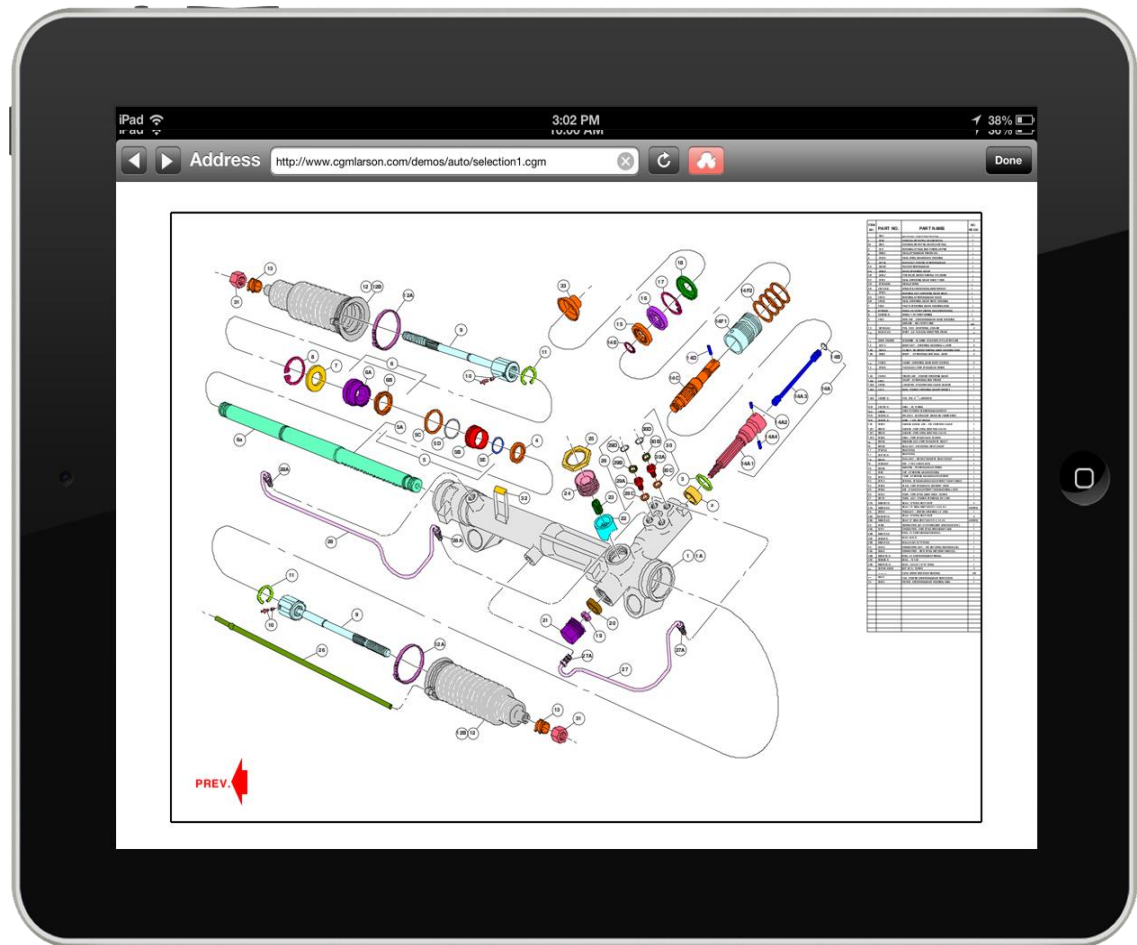
Interactive 2D CGM Support

Solution Enhancement

- Interactive 2D Graphics Support

Key Benefits

- Connecting 2D Graphics to SAP Business Data
- Acceptance of CGM across SAP EAM Verticals & International Industry Standards such as the Commercial Airlines, Auto and Trucking, Aerospace & DOD, Railroad Industry, Petroleum Industry



Integrated Product Change Management

Engineering Change Management

- Integrated Change Management support for PLM objects
- Support ECR/ECO process
- Embedded Ad-Hoc workflow functionality
- Integration to BCV for real time information needs in the context of the parts you plan to change

Change Engineering Change Record: DH-CARLZEISS

Record Number: DH-CARLZEISS Description: Daniels Change Record Change Record Type: ECRD Status: Change Completed
Run-In Date: 24.12.2009 Change Coordinator: Huber, Daniel

Buttons: Save, Close, Read Only, Check Entries, Hide Header Data, Additional Functions

Header Data

Change Record Description: Daniels Change Record (Long Text)
Reason for Change: 0001 Customer Request
Priority: 2-High
Lead Change Number: 772 Daniels Change Record
Change Number Status: 02 Inactive
Valid From: 06.07.2002

Change Record Status: 60-Change Completed
Target Run-In Date: 24.12.2009
Customer: 723 CARL ZEISS
Customer Reference Number: 111-222-333
Change Coordinator: HUBERDA Huber, Daniel

Access Control Context
Owning Context: PLM_DEMO_CONTEXT5 sample
Context authorizations are irrelevant.

Change Items | Process Route | Notes | Administrative Data | Documents | Authorizations

All Objects | Document | Material | Material BOM Item | Assembly Header | Assembly Item | Product Item Variant | Product Variant | Recipe | Specification

Object Type	Object ID	Chg. Relevance	Grouping	Item Cost Chg.	Eng Cost	Investment	Currency	Status
Material	SERVOMOTOR	CHA		4,00	200,00	3.000,00	EUR	CHPL
Document	SVA1000000587/000/00	CHA		3,00	200,00	100,00	EUR	CHPL
				0,00	0,00	0,00		
				0,00	0,00	0,00		
				0,00	0,00	0,00		
				0,00	0,00	0,00		
				0,00	0,00	0,00		
				0,00	0,00	0,00		
				0,00	0,00	0,00		

Additional Information

Overview: Quality Overview

Quality Notifications (BC from BAPI)

Material	Notif. No.	Cr
SERVOMOTOR	000200001030	09
SERVOMOTOR	000200001031	09
SERVOMOTOR	000200001032	09
SERVOMOTOR	000200001033	09
SERVOMOTOR	000200001060	09

PDD Quality Notifications (via BAPI)

Bar chart showing quality notifications (Com. Qty.)

Change Items | Process Route | Notes | Administrative Data | Authorization

Buttons: Expand, Collapse, Show Details, Add parallel Task, Add sequential Task, Delete Task, Additional Functions

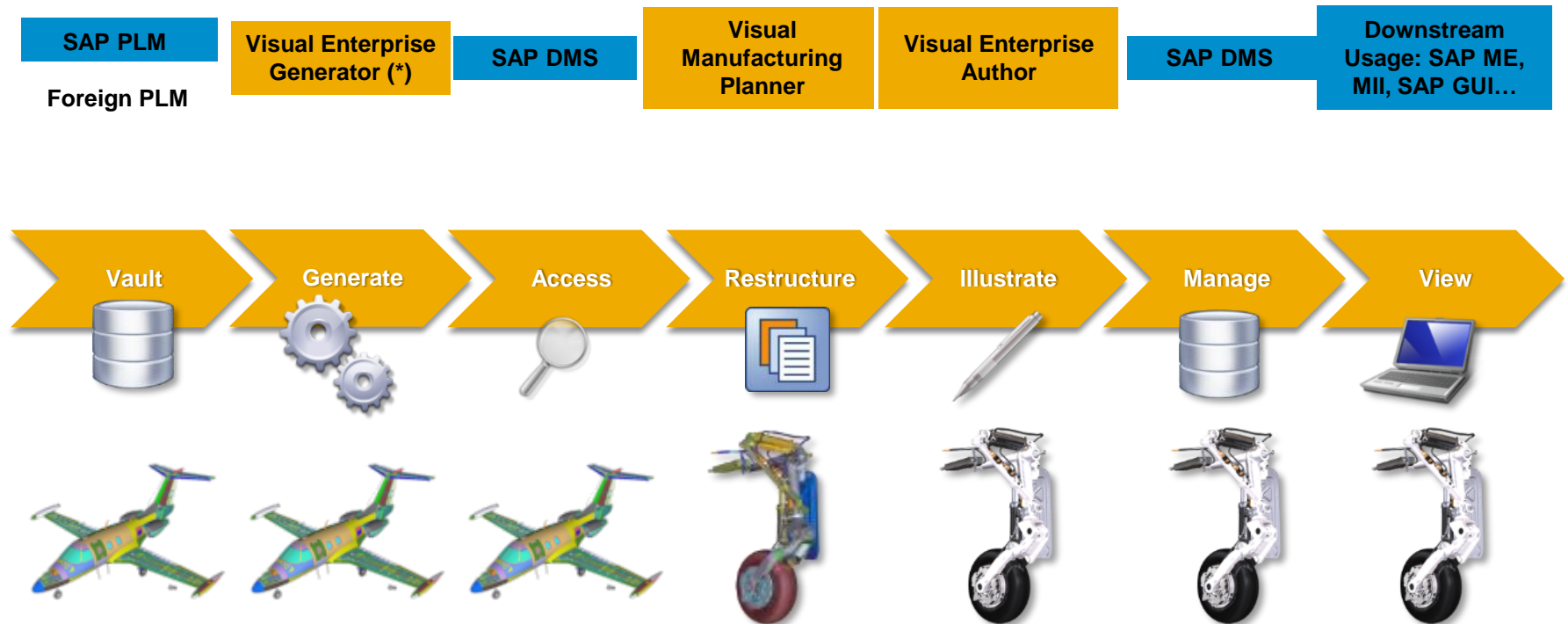
Process Tasks	Type	Activity	Status	Load Process Route	Insert Process Route	Save Process Route as Template	Time	Latest end (time)
Header								
Parallel Tasks								
Mueller, Frank	SAP User	Display Change Record	Finished	Create Note			01.07.2010	
Heinrich, Nina	SAP User	Final Signature	In Work	Edit Note			04.07.2010	

Buttons: Save, Close, Read Only, Check Entries, Hide Header Data, Additional Functions

You Can Also Related Links

SAP Visual Enterprise Product Engineering

Example of Integrated Workflow



Legend

SAP Platform

Included in
Enterprise Product
engineering

* Depending on the CAD data volume, additional Visual enterprise Generator Cores may be required