

# E<sup>3</sup>.series

## SAP / PLM Integration

D A T A S H E E T

### Introduction

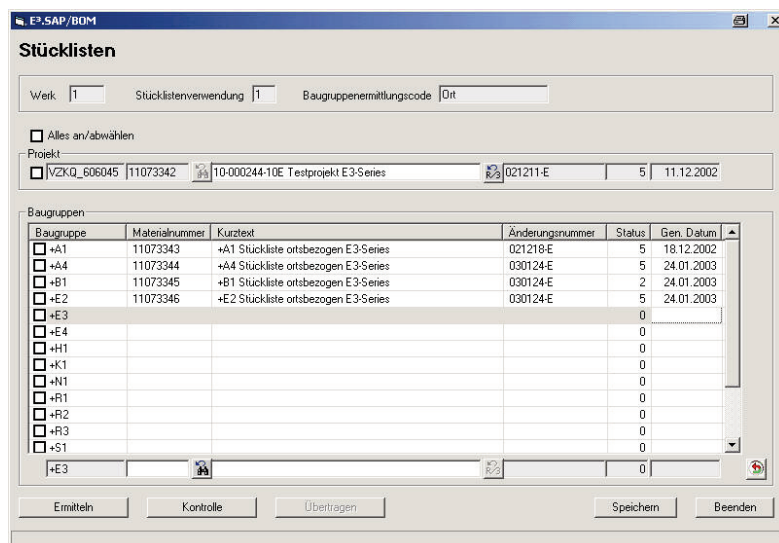
The integration of E<sup>3</sup>.series into SAP/PLM consists of three modules. Each of these modules can be individually licensed and enhanced to meet specific customer requirements:

- Material Management (MM) – Management of the component master data, parallel in E<sup>3</sup>.series and SAP
- Bill of Materials (BOM) – Transfer of simple or structured bills of material to SAP
- Document Management System (DMS) – Document management of E<sup>3</sup>.series documents in SAP

### Technical Background

The E<sup>3</sup>.series / SAP integration is based on E<sup>3</sup>.series API and SAP - BAPI (Business Application Programming Interface) and RFC (Remote Function Call) and thus communicates directly with the SAP modules.

SAP is directly connected to the E<sup>3</sup>.series, which means that the SAP search functionality can also be used for E<sup>3</sup>.series objects.



The screenshot shows the 'E3.SAP/BOM' window with the title 'Stücklisten'. It contains a search bar with fields for 'Werk', 'Stücklistenverwendung', and 'Baugruppenermittlungscode'. Below this is a table of project data with columns for 'Projekt', 'Materialnummer', 'Kurztext', 'Änderungsnummer', 'Status', and 'Gen. Datum'. The table lists several projects, including '11073343', '11073344', '11073345', and '11073346'. At the bottom, there are buttons for 'Ermitteln', 'Kontrolle', 'Übertragen', 'Speichern', and 'Beenden'.

Projekt	Materialnummer	Kurztext	Änderungsnummer	Status	Gen. Datum
11073343	A1	Stückliste ortsbezogen E3-Series	021218-E	5	18.12.2002
11073344	A4	Stückliste ortsbezogen E3-Series	030124-E	5	24.01.2003
11073345	B1	Stückliste ortsbezogen E3-Series	030124-E	2	24.01.2003
11073346	E2	Stückliste ortsbezogen E3-Series	030124-E	5	24.01.2003
	E3			0	
	E4			0	
	H1			0	
	K1			0	
	N1			0	
	R1			0	
	R2			0	
	R3			0	
	S1			0	
	E3			0	

E<sup>3</sup> SAP interface

## E<sup>3</sup>.series Integration to SAP/MM

Using the Material Management module, components can simultaneously be created or modified in the E<sup>3</sup>.series and SAP databases. The master data record in E<sup>3</sup>.series is linked to the entry in SAP R/3. In addition, shared fields are also displayed.

The material dialog can be directly called for modification. If the E<sup>3</sup>.series components library is modified, a query of the relevant entries for SAP will be displayed when saving.

This is to ensure component data consistency in SAP and E<sup>3</sup>.series at any given time.

## E<sup>3</sup>.series Integration to SAP/BOM

To transfer bills of material (BOMs) a structure can be predefined with the option of freely selectable characteristics for the BOM structure. A simple structure (without characteristics), a structure by higher level assignment, location or a combination of both are available.

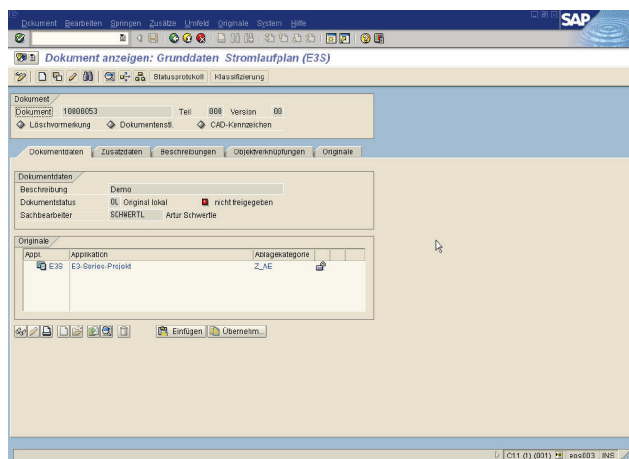
The bills of material are created in a project and transferred to SAP if required, where they are assigned a material number. Each time a modification is made a modification number is assigned.

## E<sup>3</sup>.series Integration to SAP/DMS

Using the document management functionality within SAP, E<sup>3</sup>.series documents can be managed. The integration provides all basic functionality of document management:

- Creation of a new document
- Modification of a document
- Checking-out a document for viewing
- Modification of the document's status
- Different versions

E<sup>3</sup>.series documents can be directly searched in the SAP document management utility and can be loaded at the push of a button.



SAP document properties dialog

Adaptations of the modules are directly executed by **CIM-TEAM** on demand and in accordance with the customer.